



# INDOFINE Chemical Company, Inc.

121 Stryker Lane, Bldg. 30, Suite 1 • Hillsborough, NJ 08844 • U.S.A.

Phone: (908) 359-6778 • FAX: (908) 359-1179

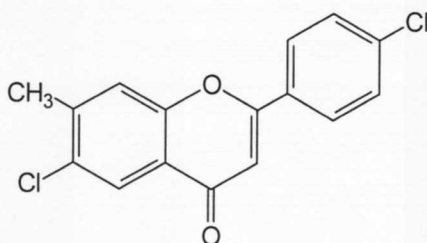
website: [www.indofinechemical.com](http://www.indofinechemical.com)

e-mail: [chemical@indofinechemical.com](mailto:chemical@indofinechemical.com)

## CERTIFICATE OF ANALYSIS

CAT. No.: 17-111

|                          |  |
|--------------------------|--|
| <u>Product Name:</u>     | 6,4'-DICHLORO-7-METHYLFLAVONE                    |
| <u>Lot Number:</u>       | 97082  |
| <u>Chemical Formula:</u> | C <sub>16</sub> H <sub>10</sub> ClO <sub>2</sub> |
| <u>MW:</u>               | 269.70   |
| <u>Melting Point:</u>    | 222-224°C  |
| <u>Appearance:</u>       | Pale brown fluffy powder                         |
| <u>TLC:</u>              | Hexane:Ethyl acetate (8:2)                       |
| <u>Solubility:</u>       | Soluble in Chloroform                            |
| <u>Purity(HPLC):</u>     | 99.72%   |





# INDOFINE Chemical Company, Inc.

121 Stryker Lane, Bldg. 30, Suite 1 • Hillsborough, NJ 08844 • U.S.A.

Phone: (908) 359-6778 • FAX: (908) 359-1179

website: [www.indofinechemical.com](http://www.indofinechemical.com)

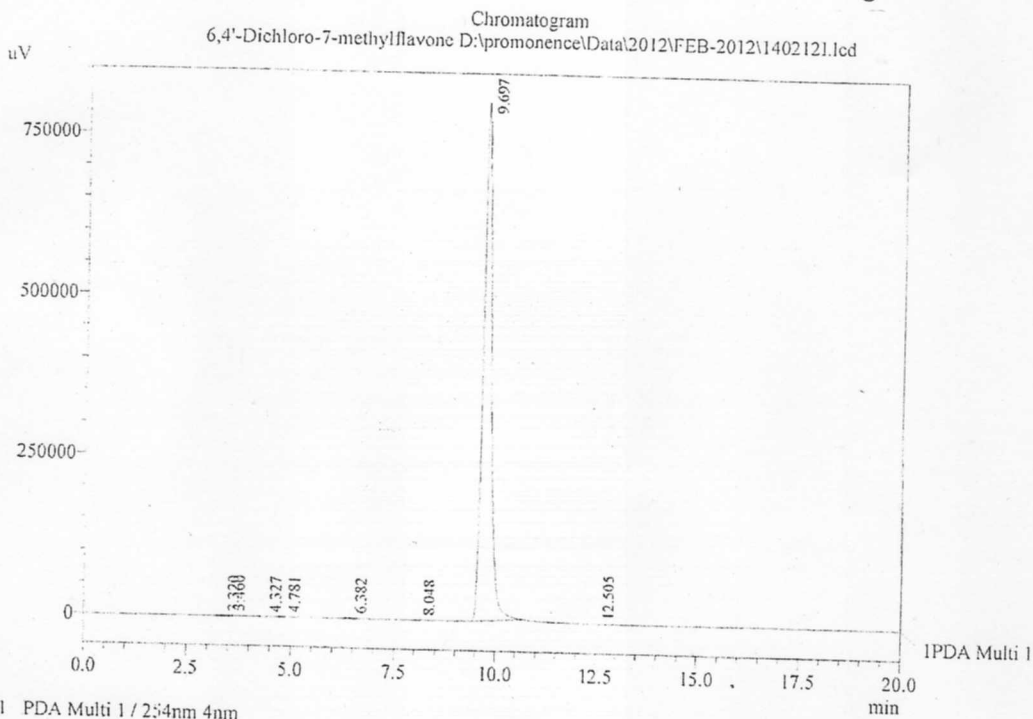
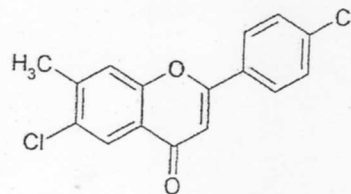
e-mail: [chemical@indofinechemical.com](mailto:chemical@indofinechemical.com)

## HPLC ANALYSIS

Acquired by : Sanjeev  
Sample Name : 6,4'-Dichloro-7-methylflavone  
Sample ID : Lot No:-97082  
Injection Volume : 20 uL  
Data Filename : 1402121.lcd  
Method Filename : Linear Isocratic.M.lcm

Catalog No.: 17-111  
Product name: 4',6'-Dichloro-7-methylflavone  
Lot No.: 97082

Date Acquired : 2/14/2012 2:59:40 PM  
Data Processed : 2/14/2012 3:41:51 PM  
Column : LUNA C-18(2), (250nm x4.6mm 5.0µ)  
Flow : 1.000 mL/min.  
Mobile Phase : A(20% of 0.05% TFA in water) B(80% of Acetonitrile)



1 PDA Multi 1 / 254nm 4nm

PeakTable

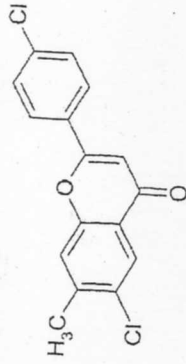
PDA Ch1 254nm 4nm

| Peak# | Name      | Ret. Time | Area     | Area % | Relative Retention Time |
|-------|-----------|-----------|----------|--------|-------------------------|
| 1     | RT:3.320  | 3.320     | 1220     | 0.01   | 0.34                    |
| 2     | RT:3.460  | 3.460     | 4408     | 0.04   | 0.36                    |
| 3     | RT:4.327  | 4.327     | 1845     | 0.02   | 0.45                    |
| 4     | RT:4.781  | 4.781     | 8354     | 0.07   | 0.49                    |
| 5     | RT:6.382  | 6.382     | 9072     | 0.08   | 0.66                    |
| 6     | RT:8.048  | 8.048     | 4777     | 0.04   | 0.83                    |
| 7     | RT:9.697  | 9.697     | 11872278 | 99.72  | 1.00                    |
| 8     | RT:12.505 | 12.505    | 3133     | 0.03   | 1.29                    |
| Total |           |           | 11905087 | 100.00 |                         |



INDOFINE Chemical Company, Inc.  
121 STRYKER LANE  
BLDG. 30, SUITE 1  
HILLSBOROUGH, NJ 08844

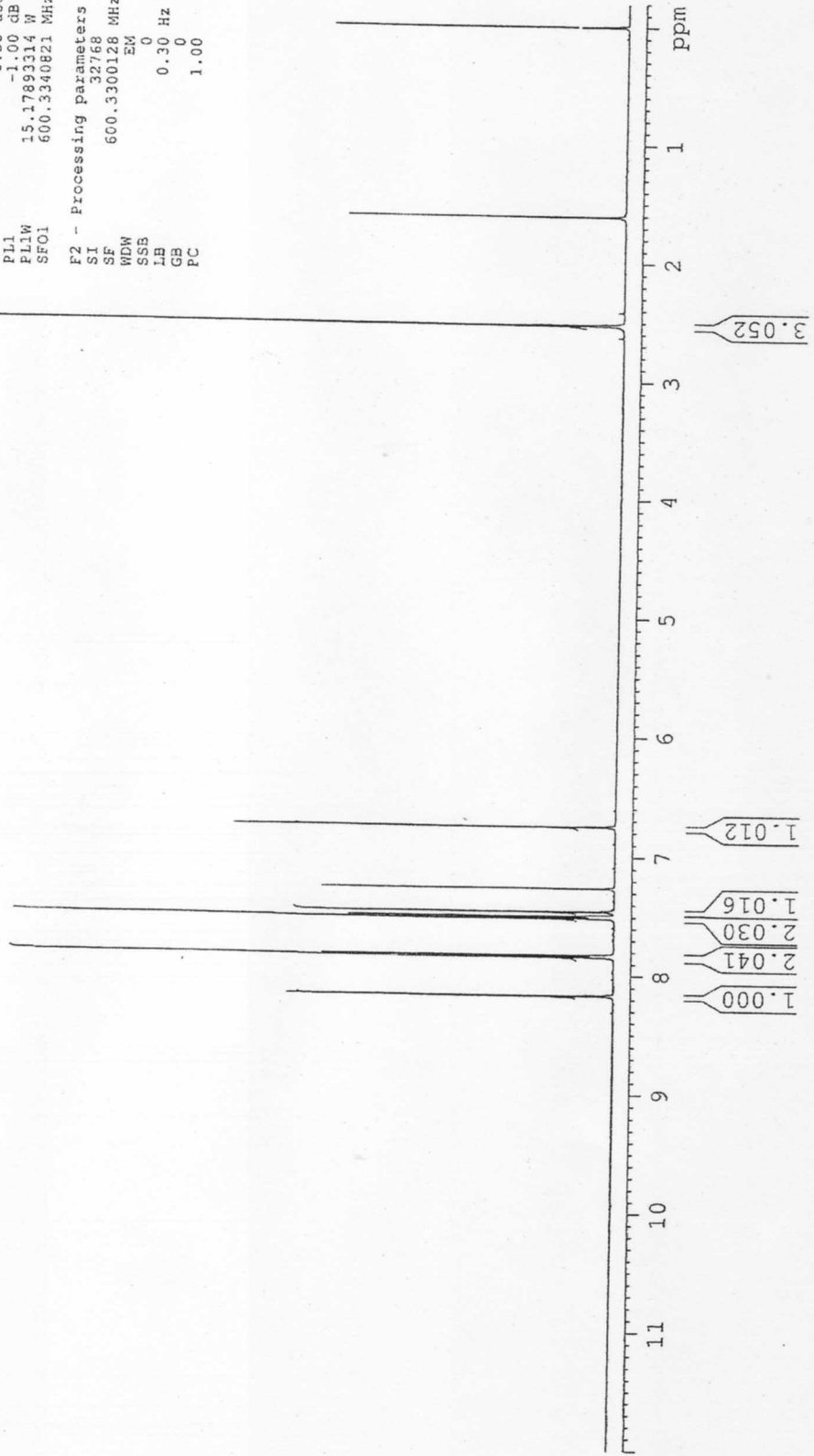
Catalog No.: 17-111  
Product name: 4',6-Dichloro-7-methylflavone  
Lot No.: 97082



ICC-12  
1H IN CDCL3  
AVANCE-600  
28-2-12

SOLVENT CDCL3  
NS 16  
DS 0  
SWH 11029.412 Hz  
FIDRES 0.382381 Hz  
AQ 1.3076447 sec  
RG 1820  
DW 45.333 usec  
DE 6.00 usec  
TE 298.2 K  
D1 1.5000000 sec  
TD0 1

==== CHANNEL f1 =====  
NUC1 1H  
P1 8.30 usec  
PL1 -1.00 dB  
PL1W 15.17893314 W  
SFO1 600.3340821 MHz  
F2 - Processing Parameters  
SI 32768  
SF 600.3300128 MHz  
WDW EM  
SSS 0  
LB 0.30 Hz  
GB 0  
PC 1.00

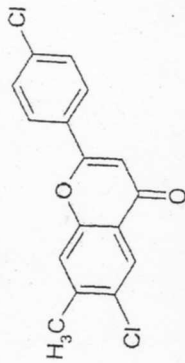




INDOFINE Chemical Company, Inc.  
121 STRYKER LANE  
BLDG. 30, SUITE 1  
HILLSBOROUGH, NJ 08844

Catalog No.: 17-111  
Product name: 4',6-Dichloro-7-methylflavone  
Lot No.: 97082

ICC-12  
1H IN CDCL3  
AVANCE-600  
28-2-12



8.169

7.842  
7.828

7.511  
7.497  
7.459

7.263

6.754

SOLVENT CDCL3  
NS 16  
DS 0  
SWH 11029.412 Hz  
FIDRES 0.382381 Hz  
AQ 1.3076447 sec  
RG 1820  
DW 45.333 usec  
DE 6.00 usec  
TE 298.2 K  
D1 1.50000000 sec  
TD0 1  
===== CHANNEL f1 =====  
NUC1 1H  
P1 8.30 usec  
PL1 -1.00 dB  
PL1W 15.17893314 W  
SFO1 600.3340821 MHz  
F2 - Processing parameters  
SI 32768  
SF 600.3300128 MHz  
WDW EM  
SSB 0  
LB 0.30 Hz  
GB 0  
PC 1.00

